
The Bullship Log



Monthly Meeting
Monday - Oct 15 @ 7:00 p.m.
Harlem Township Hall

Ahoy Sailors!

We are already into October and fall happened Sept. 22nd (The day of Adopt – a – Road). The pool is closed, the garden has been cleaned out and I was hoping for another good day to go sailing, but it didn't happen so I covered the boats and parked them in the back of the yard. (Left a few ruts in the yard from all the rain - oops). I hope you were able to get in all the sailing you wanted to this year. Thanks to everyone that helped out at Adopt – a – Road, it went fairly quick and we all had a nice visit during breakfast.

At the October meeting we need to nominate officers for next year and then vote on them at the November meeting. I have been serving as the Commodore for the club for the last two years but will not be able to next year. Please consider this position or any position in the club for yourself. It is good to get different members in club positions to get a new perspective for the club. On the other hand, if you like the position you have with the club, you can ask to retain it.

The positions are as follows:

Commodore
Vice Commodore
Yeoman
Purser
Membership Captain
Activities Captain
Flotilla Captain

Also at the October meeting, we should pick a place to have the Christmas party so that we can make reservations for it.

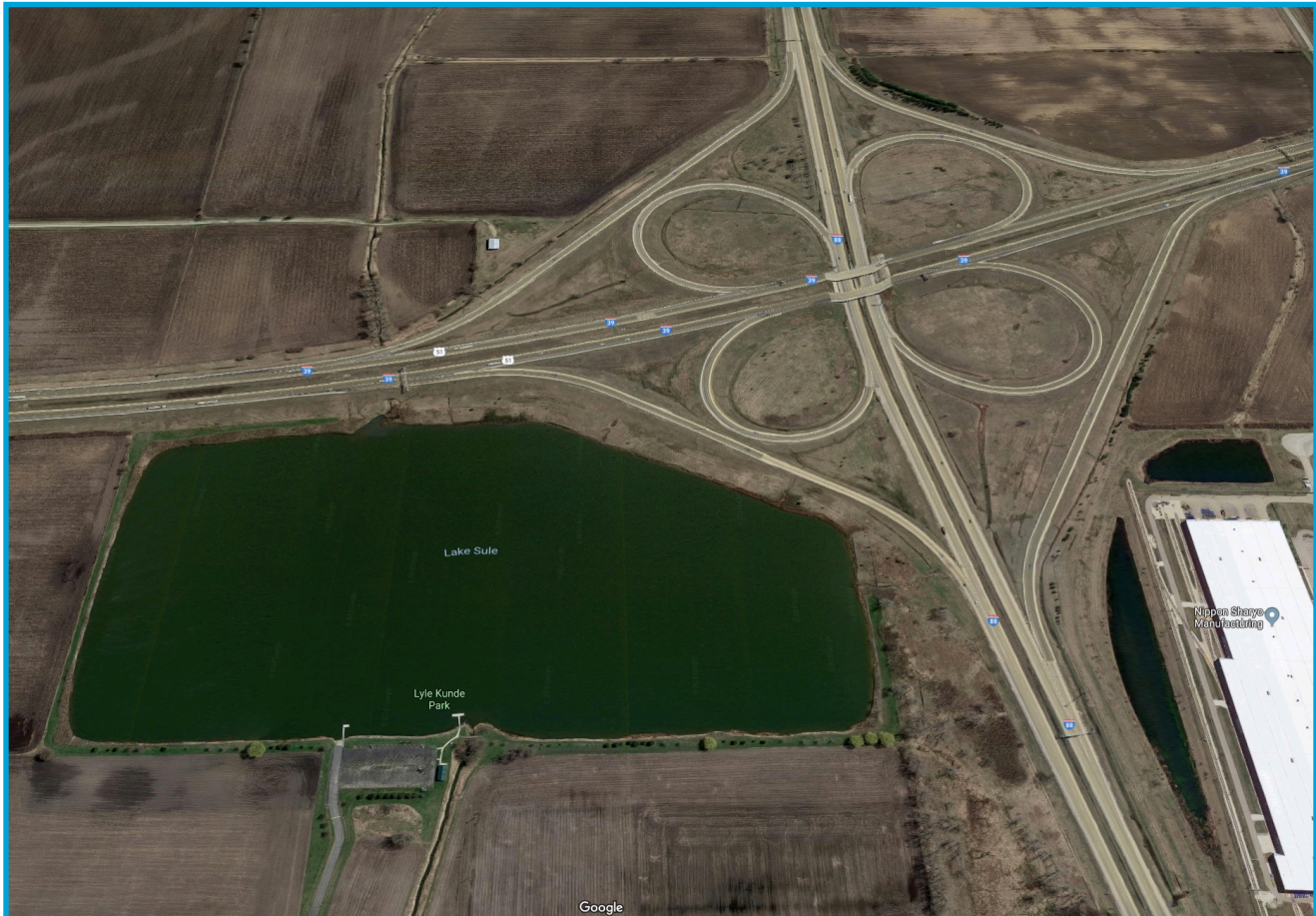
Next meeting will be on Monday, Oct. 15th at Harlem Township Hall. We once again will have access to the internet so can use the club TV to share sailing picture and videos. Maybe we could start a you tube channel for club videos.

Commodore Brian

Dinghy Sailing on Lake Sule ~Marty O'Connor

September 23rd was quiet Sunday afternoon with fairly light winds, so Linda and I decided it would be a good time to try out a small lake we'd never been on, even though it is one of the closest to our home in DeKalb.

As described by the Rochelle District website: "Lake Sule is located at the intersection of I39 & I88. It measured 77 acres and is approximately 20 feet deep. A perfect place to launch your boat and fish for a while and then come back to shore for a picnic!"



Brings new meaning to the lyrics "I'm looking over a four-leafed clover" yet it proved to be a fine place to launch and sail a small boat like our American 14-6. Although the single ramp is relatively narrow and steep, there are no trees or overhead obstructions, making launching quite simple. The plastic floating L-shaped dock is very nice, with ample cleats and comfortable sitting bench. The only concern is to make certain to lead your bow line clear of the tall handrails before actual launch. Retrieval is not difficult, except for the steep angle, which means centering the boat requires some assistance or tall gunwhale guides on your trailer. Winds were from ESE on the day, so the smartest way to sail off the dock was pointed east from the north side of the dock, with boards fully lowered, since there is enough depth to do so. We had a fun sail, and people said how much they enjoyed the calming sight of a sailboat from the shore and fishing dock. I imagine it was a treat for highway travelers as well.



